

2018

CRUISES ICELAND AND GREENLAND





Welcome Onboard!

Ladies and Gentlemen:

With more than 13 years of experience, the Iceland ProTravel Group has grown into leading specialist for soft adventure in Iceland and Greenland.

Following the example set during our first two seasons, cruises onboard the OCEAN DIAMOND are personal, professional and very authentic, with shore excursions that blend warm Icelandic and Greenlandic hospitality with the region's rich Viking heritage and indigenous Inuit and European cultures.

No matter which of our itineraries you choose – a circumnavigation around Iceland, the historic Viking route across the Denmark Strait to Greenland, or a boat-coach – our experienced and knowledge-

able Expedition Team helps you experience the breathtaking nature and locals ways of life. As an Icelandic owned and operated company with many local staff, we know the islands like no one else.

Given the growing popularity of Iceland as a tourist destination – and the hotel room shortage that has materialized as a result – our cruises offer an excellent alternative to staying on land. Our itineraries are also good value, competitively priced to show you the best of Iceland and Greenland at a reasonable cost.

Because the ice-strengthened OCEAN DIAMOND accommodates no more than 199 passengers, there's a very personal, casual and



OCEAN DIAMOND in Greenland

comfortable atmosphere onboard. The ship's excellent maneuverability allows for access to remote bays and fjords, while excursions aboard our Zodiac boats provide even greater accessibility to unique and wonderful places that larger ships cannot venture.

Take a look at the various programs detailed in our new brochure.

I look forward to welcoming you aboard the OCEAN DIAMOND in 2018!

Gudmundur Kjartansson, CEO



OUR ROUTES AT A GLANCE



Route	Date	Departure	Date	Arrival	Nights
Iceland Circumnavigation	11.05.2018	Reykjavik	20.05.2018	Reykjavik	9
Iceland Circumnavigation	20.05.2018	Reykjavik	29.05.2018	Reykjavik	9
Iceland Circumnavigation	29.05.2018	Reykjavik	07.06.2018	Reykjavik	9
Iceland Circumnavigation	16.06.2018	Reykjavik	25.06.2018	Reykjavik	9
Iceland Circumnavigation	25.06.2018	Reykjavik	04.07.2018	Reykjavik	9
Iceland Circumnavigation	04.07.2018	Reykjavik	13.07.2018	Reykjavik	9
Iceland Circumnavigation	13.07.2018	Reykjavik	22.07.2018	Reykjavik	9
Iceland and Natural Wonders of Greenland	22.07.2018	Reykjavik	02.08.2018	Kangerlussuaq	11
Natural Wonders of Greenland and Iceland	23.08.2018	Kangerlussuaq	03.09.2018	Reykjavik	11
Iceland Circumnavigation	03.09.2018	Reykjavik	12.09.2018	Reykjavik	9
Iceland Circumnavigation**	15.09.2018	Reykjavik	22.09.2018	Reykjavik	7
Northern Lights and Whales Tour 1 *(combination cruise and coach tour)	22.09.2018	Reykjavik	28.09.2018	Reykjavik	6
Northern Lights and Whales Tour 2 *(combination cruise and coach tour)	22.09.2018	Reykjavik	28.09.2018	Reykjavik	6



Iceland Circumnavigation

**Iceland Circumnavigation Express, 7 nights – see page 17

Northern Lights and Whales

* 3 overnight stays on board, 3 overnight stays in hotels
– Combination cruise and coach tour – see page 18 & 19

Iceland and Natural Wonders of Greenland or Natural Wonders of Greenland and Iceland

UNFORGETTABLE, COMFORTABLE, AUTHENTIC! ENJOY ICELAND AND GREENLAND ONBOARD THE OCEAN DIAMOND!

Contents

Route Map.....	4-5	Cruise Iceland & Natural Wonders of Greenland.....	26-27
Travel with Iceland ProCruises.....	6-7	Cruise Natural Wonders of Greenland & Iceland.....	28-29
Greenland and Iceland Highlights.....	8-9	Greenland Shore Excursions.....	30-31
Expedition Team.....	10-11	Fly & Cruise, Hotels and Car Rental.....	32-33
Iceland	12-13	Pre and Post Programs, Rental Car Tour	34-35
Cruise Iceland Circumnavigation	14-17	Practical Information	36-37
Cruise Northern Lights & Whales.....	18-19	OCEAN DIAMOND, Facts, Deck Plan, Cabin Descriptions	38-41
Iceland Shore Excursions	20-23	Terms & Conditions.....	42
Greenland	24-25	Imprint.....	43



Zodiac tour

Discover Our Iceland and Greenland

With an ice-strengthened hull, advanced onboard technology and relatively small vessel size, the OCEAN DIAMOND is able to offer an adventurous sea voyage in Arctic waters beyond the boundaries of a conventional cruise itinerary. Join us on a voyage of discovery as we share the unique nature, geology, culture and history of these big North Atlantic islands while being pampered with a level of comfort and service normally not available in such remote regions.

Discover Our Enthusiasm and Expertise

Members of our English and German-speaking Expedition Team all have one thing in common: the utmost experience and enthusiasm. Everyone looks forward to showing you the most beautiful corners of destinations they love and know from the inside out.

Discover Our Shore Excursions

All of our crew members have already logged many years of experience as tour guides and/or lecturers. You can look forward to them sharing their passion and expertise with you both onboard and during our many exciting shore excursions and landings.

Discover Our Secret Places

Our itineraries include stops that offer excursions to places that are normally very difficult to reach and visited by only the lucky few each year. We also offer pre- and post-cruise experiences in Iceland so that you can extend your adventure in the North Atlantic and experience even more of our Nordic charm.

GREENLAND AND ICELAND



Uummannaq

Located 300 miles (500 km) north of the Arctic Circle, Uummannaq is one of the most beautiful towns in Greenland. The town takes its unusual name – Uummannaq means “heart shaped” in Greenlandic – from a massive mountain (3,839 feet/1,175 meters) that towers above the island. An interesting local museum features an exhibition of German climatologist and geophysicist Alfred Wegener’s 18th-century polar exploration.

Nuuk

Greenland’s capital has around 16,000 inhabitants and combines Inuit traditions with modern European urbanity. It’s also Greenland’s oldest town, founded in 1728 by the Danish Norwegian missionary Hans Egede. The National Museum features 500-year-old mummies from Qilakitsoq, as well as other artifacts related to Greenland archaeology, history and art. The Katuaq Cultural Center in downtown Nuuk is the venue for concerts, exhibitions, cinema and local cuisine. The University of Greenland, the country’s only university, is also located in Nuuk.



Narsarsuaq

Located near Greenland’s southern tip, Narsarsuaq lies in the heart of the region pioneered by the ancient Norse. Nearby Qassiarsuk was founded by notorious Viking Erik the Red after his banishment from Iceland. He named the area “Green Land” because of its lush, fertile valleys. During our shore stop, you can learn about the lives of the island’s early Norse settlers while visiting a Viking long-house and small peat church.



Disko Bay/ Eqip Glacier

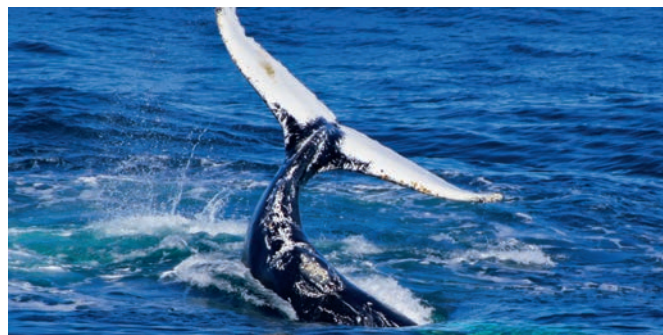
Disko Bay combines incredible iceberg scenery and Inuit hospitality. Along the eastern edge of the bay is Ilulissat, the third largest town in Greenland. The name means “iceberg” in Greenlandic, a reference to its location at the mouth of the Iceberg-filled Ilulissat Ice Fjord, a UNESCO World Heritage Site since 2004. Few places in Greenland are as breathtaking as Eqip Glacier, 50 miles (80 km) north of Ilulissat. With a little luck, your visit will include a close-up view of icebergs “calving” as huge chunks of ice break off and thunder into the sea.



Prince Christian Sound

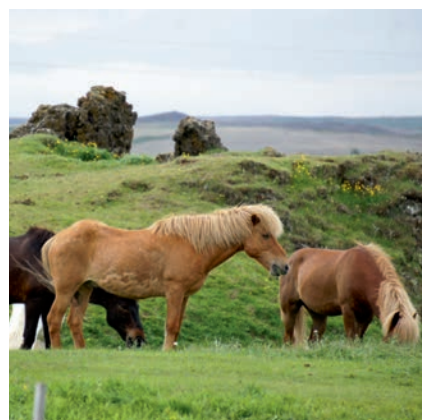
The force of Greenland’s massive inland icecap pushes glaciers towards the sea, where large chunks of ice break off and become floating icebergs. When we cruise the 70-mile (100-km) Prince Christian Sound – which separates the Cape Farewell islands from the mainland – we get so close to icebergs that you can almost reach out and touch them.





The North

Nowhere else in the world do so many whales gather in one area as the waters off northern Iceland. Observing whales in the wild is always a thrilling adventure. Iceland's second largest city, Akureyri boasts colorful architecture and an impressive botanical garden.

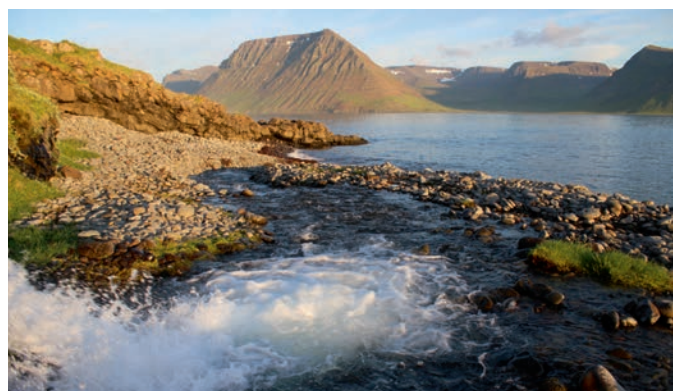


The East

The eastern coast of Iceland is dominated by narrow fjords, rugged mountains, remote homesteads and historic fishing villages. Here you find a variety of hiking trails that lead through untouched nature and spectacular scenery. Among the region's highlights are the town of Djúpivogur on the Berufjörður fjord and Jökulsárlón Glacier Lagoon, full of icebergs from Breidamerkurjökull glacier.

The South

Some of the best known Icelandic sights are in this area including the Strokkur geyser, the geologically and historically interesting Thingvellir area, and the imposing Gullfoss waterfall. Also located here is the famous Eyjafjalla Glacier, which covers the caldera of an ancient volcano. The Westmans are a group of 14 volcanic islands, only one of which (Heimaey) is inhabited. Several spectacular waterfalls and dramatic sea cliffs are also found along the south shore.





Expedition team in 2016

Greetings from the OCEAN DIAMOND!

The perfect cruise needs the perfect crew!

And that's exactly what you find on the OCEAN DIAMOND – personable, cheerful and knowledgeable operation staff and expedition team members who enjoy serving and giving advice throughout the voyage.

Here are some of our Icelandic crewmembers.

"As we start our fourth season in the North Atlantic, we again promise unique experiences onboard the OCEAN DIAMOND. Spectacular scenery and amazing wildlife await. I look forward to bringing you closer to my home! This season includes nine circumnavigations of the island, two trips to Greenland and a ship-coach combination with a focus on the Northern Lights and whales that promise unforgettable experiences on land and water. In the coming season

you can look forward to interesting lecturers, a helpful hotel and service crew, an enthusiastic expedition team that speaks English and German, and an accomplished captain, all bringing you closer to the surrounding nature and history."

Örvar Mar Kristinnsson, Expedition Leader



Örvar Mar Kristinnsson

The native Icelander has worked as a professional guide since 2007. His fortes include the history, geology and everyday life in Iceland. Örvar especially loves the unspoiled nature and the constant, geological change of his homeland. Our expedition leader since our first season is not only an experienced leader but also a trained singer.

Birgir Robert Johannesson – Expedition Leader



"BiJo" moved from Iceland to Berlin, Germany, to study industrial engineering before becoming a guide. His diverse knowledge and interests range from economics to the flora and fauna he discovers while pursuing his passion for hiking. Birgir is very open-minded and loves learning about different cultures and

lifestyles. He puts a strong emphasis on safety during his guided hiking tours so that guests can enjoy Iceland at its best.

Hermann Gudmundsson – Guide



A former professional handball player, Hermann recently completed his studies in Tourism Management at the University of Iceland. In addition to studying, he worked as a guide at the Arbaejarsafn open-air museum in Reykjavik. The native Icelandic spent two years of his childhood in Germany and speaks the language fluently.

Hermann feels most comfortable in nature and looks forward to assisting guests onboard the OCEAN DIAMOND.

Arndis Halla Asgeirsdottir – Guide, Entertainment



This native Icelandic is a well-known opera singer and the voice of Apassionata, a long-running European equestrian entertainment show. Her other passion is making her home country more accessible in a very charming and entertaining way. Arndis enjoys talking about Iceland, its people and especially its folkloric super-

stitions, especially century-old tales about elves and trolls. She loves Iceland's fresh air, the colors found in nature and the wide variety of natural landscapes.

Svenja Laukart – Expedition Counter



The Scandinavian countries have been fascinating Svenja her whole life. The 29-year-old was born not far from the Danish border in Northern Germany. Her bachelor course in Flensburg with focus on sport and event management included also two semesters in Norway and USA.

The subsequent master course Svenja

absolved in Denmark in 2015. Valuable working experience she could moreover gain as a management team member of a language travel camp in England. Svenja is looking forward in showing our guests the extraordinary sceneries of the North, which she enthuses about herself.

Petur Gauti Valgeirsson – Expedition Leader



"Peter" is another native Icelandic with a deep love of his home country. As a long-time tour guide in Iceland and in other countries, he loves showing the beauty of Iceland to visitors. Pétur also has a passion for photography and enjoys capturing Icelandic landscapes, local bird life and, of course, the magical Northern Lights. He's

also very interested in geology and geography. Many of his ancestors were fishermen so perhaps salt water flows through his veins as well.

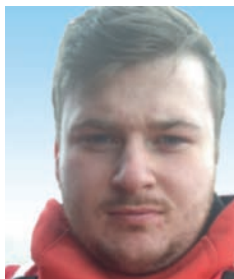
Steingrímur Gunnarsson – Lecturer



Steingrímur (Steini) has been enjoying leading guests around the world since 1972. He is an outdoor man with a passion for the open vistas, wildlife and fauna of Iceland and Greenland. He is constantly expanding his knowledge of these countries and loves to share with others. He possesses a M.A. from University of Salford

in International Relations and a Bachelor of Science from the University of Oslo. Steini also has a teaching degree from University of Iceland.

Stefan Fridbjarnarson – Assistant, Zodiac Driver



Stefan Fridbjarnarson is an experienced zodiac driver from Hnífsdal, close to Isafjörður. Already at the age of 12 he was driving his first zodiac and fell in love with them. In 2008, at the age of 14, he became a member of the rescue team HSSK in Tindar next to Hnífsdal. This is a voluntary organization which helps people in emer-

gency situations e.g. first-aid, lifeboat or mountain rescue, etc. Since then Stefan is a part of the lifeboat department. Look forward to enjoy your safe zodiac-rides with this experienced zodiac driver!

Frederike Olms – Expedition Counter



Frederike spent the summers in her childhood primarily in Scandinavia and was very enthusiastic about the beautiful landscape, the flora and the fauna. Within her tourism studies, she already gained professional experience in the marketing department of a cruise company in Germany and in the customer advisory

services department in Spain. But she discovered the passion for ships at work on board a cruise ship. Full of anticipation, she embarks the OCEAN DIAMOND to explore the land of the elves and trolls together with the guests.

ICELAND



The land of fire and ice is one of the most
fascinating places on planet Earth!

. The awe-inspiring landscapes, the pristine forces of nature, the infinite and always-surprising combinations of earth, water, fire and air are everywhere.





ICELAND CIRCUMNAVIGATION

Discover the Island of Contrasts

Experience an unforgettable journey around Iceland onboard the OCEAN DIAMOND. Discover this mystical land steeped in Viking traditions and volcanic landscapes rarely seen anywhere else on earth.

This voyage reveals a diverse array of natural wonders and the Icelandic way of life. A range of exciting shore excursions offers countless ways to interact with Iceland's culture, nature, history and people.

Day 1 | Reykjavik

Use your leisure time in Reykjavik to discover the unique charm of the world's northernmost capital. The OCEAN DIAMOND docks in Old Reykjavik Harbor in the heart of the city, a five-minute stroll from the main squares, shopping and dining. The ship departs in the evening.

Day 2 | Stykkisholmur

Stykkisholmur is the starting point of our adventures on the Snaefellnes Peninsula. Often called "Iceland in Miniature" because of its diverse landscapes, the area is home to bird-rich Breidafjörður Bay and Snaefellsjökull glacier, which sits atop a 700,000-year-old dormant volcano that was featured in the Jules Verne novel *Journey to the Center of the Earth*.

Day 3 | Isafjörður

Today's destination is Isafjörður, an idyllic town in the Westfjords region. This secluded peninsula is connected to the Icelandic mainland by only a narrow strip of land and includes many roadless areas where cars have never been. The landscape includes jaw-dropping views of dramatic fjords carved by ancient glaciers, sheer table mountains that plunge into the sea and pristine North Atlantic vegetation.

Church of Budir





Cruising towards Seydisfjordur

Day 4 | Siglufjordur/Grimsey

By morning we reach the fjord town of Siglufjordur, once the hub of the global herring industry and now enjoying a rebirth in popularity. Learn about the golden age of herring at the award-winning Herring Era Museum located on the vibrant harbor-front. In the early afternoon we head to uninhabited Grimsey Island. Located about 25 miles (40 km) off the mainland on the Arctic Circle, the island harbors a variety of bird species including puffins, guillemots and gulls. Later we set sail for Akureyri, Iceland's lovable second largest city.

Day 5 | Akureyri

Ranging inland from Akureyri, we visit the fascinating Lake Myvatn region, where the schizophrenic landscape looks as if "heaven and hell" have clashed. One side of the lake features rugged volcanic remnants, while the other side is blessed with lush vegetation and varied bird life.



Snæfellsnes peninsula



Godafoss, the waterfall of the gods

Day 6 | Husavik

In the early morning hours we steam into Skjalfandi Bay and Husavik. Often called the “Whale watching capital” of Iceland, the town’s offshore waters are home to 15 different whale species, as well as dolphins and 30 variety of bird. Watching these graceful ocean giants in their Arctic habitat is an unforgettable experience.

Day 7 | Seydisfjordur

Iceland’s East Fjords are best explored from the impossibly picturesque port of Seydisfjordur, nestled between the sea and steep mountains. Activities include seal spotting, horseback riding, and visiting the beautiful nature reserve Skalanes.

Day 8 | Djupivogur

Today’s port of call is Djupivogur, fishing village in southeast Iceland, starting point for an optional excursion to the glacier lagoon.

Day 9 | Vestmannaeyjar (Westman Islands)

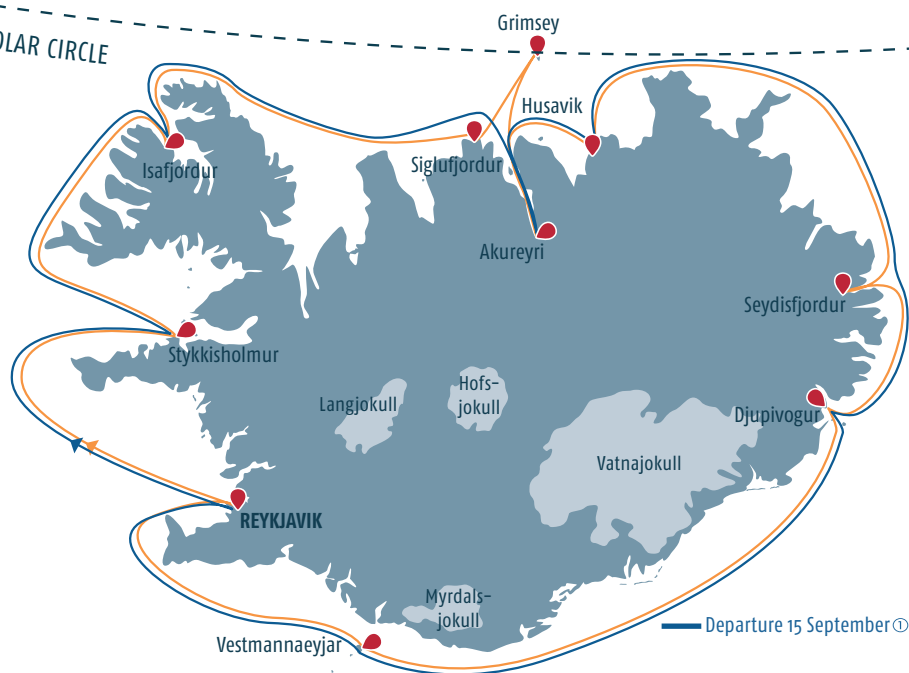
Located off Iceland’s south coast, the Westman Islands were formed by submarine volcanic eruptions around 10,000 years ago. Surtsey Island emerged from the sea in 1963 and is one the youngest land masses on earth. We go ashore on Heimaey, the only inhabited island, where half-buried houses remain from a violent 1973 eruption. During the shore landing there is time for bird watching and you might even spot whales.

Jokulsarlon Glacier Lagoon



Photo: Hermann Gudmundsson

66°33' N POLAR CIRCLE



Day 10 | Reykjavik

After breakfast we bid farewell to the OCEAN DIAMOND as we sail back into Reykjavik. Explore inland areas like the Golden Circle and its famous Gullfoss waterfall via our Air & Ground package or other post-cruise programs. Or simply hang out in Reykjavik, a perfect city for those who want to refresh their spirit in a place that combines invigorating outdoor activities, great food and world-class entertainment.

All routes and excursions are provisional and subject to change as weather, sea and ice conditions may affect the itinerary.

① Departure 15 September:

Day	Port	Arrival	Departure
1	Reykjavik		20:00
2	Stykkisholmur	08:00	19:00
3	Isafjörður	07:00	17:00
4	Akureyri	08:00	22:00
5	Husavik	06:00	16:00
6	Djupivogur	06:00	18:00
7	Vestmannaeyjar	09:00	21:00
8	Reykjavik	08:00	

Note: Information about our Air & Ground Packages can be found on page 32.

Puffin - a popular subject for photos



Iceland Circumnavigation

Cruise Dates 2018

11 May - 20 May 2018	180D1	Season B
20 May - 29 May 2018	180D2	Season B
29 May - 7 Jun 2018	180D3	Season C
16 Jun - 25 Jun 2018	180D5	Season C
25 Jun - 4 Jul 2018	180D6	Season C
4 Jul - 13 Jul 2018	180D7	Season C
13 Jul - 22 Jul 2018	180D8	Season C
3 Sep - 12 Sep 2018	180D12	Season B
15 Sep - 22 Sep 2018 ①	180D14	Season A

Day	Port	Arrival	Departure
1	Reykjavik		20:00
2	Stykkisholmur	08:00	19:00
3	Isafjörður	07:00	17:00
4	Siglufjörður	08:00	12:00
5	Grimsey	15:00	19:30
6	Akureyri	01:00	23:59
7	Husavik	06:00	17:00
8	Seydisfjörður	08:00	23:59
9	Djupivogur	06:00	18:00
10	Vestmannaeyjar	09:00	21:00
11	Reykjavik	08:00	

Included

- Accommodation in booked cabin category
- All meals (breakfast, lunch and dinner)
- Coffee, tea and water
- All Zodiac excursions (weather dependent)
- Icelandic/English speaking guide
- All presentations from cruise staff and guest speakers
- Onboard entertainment program
- Iceland ProCruises Windjacket

All routes and excursions are provisional and subject to change. All Zodiac excursions are weather dependent.

For advice on gratuities see page 36.

From GBP

1,325
per person

Early bird prices 2018 in GBP*

Cabin Category	Occupancy	Season A	Season B	Season C
T**	3	1,325	1,640	1,730
P	2	1,999	2,465	2,599
P	1	3,495	4,299	4,545
O	2	2,770	3,430	3,585
O	1	4,845	5,999	6,275
D	2	3,440	4,230	4,445
D	1	6,015	7,399	7,775
B	4	2,375	2,925	3,065
B	3	3,165	3,895	4,085
B	2	4,750	5,850	6,125
A	2	5,895	7,265	7,625
A	1	10,315	12,699	13,340

* Early bird prices valid until 30 december 2017, ** upper berth

Prices 2018 in GBP*

Cabin Category	Occupancy	Season A	Season B	Season C
T**	3	1,660	2,050	2,165
P	2	2,495	3,080	3,250
P	1	4,370	5,385	5,680
O	2	3,465	4,290	4,485
O	1	6,060	7,499	7,845
D	2	4,299	5,285	5,555
D	1	7,520	9,250	9,720
B	4	2,970	3,655	3,830
B	3	3,955	4,875	5,099
B	2	5,935	7,299	7,660
A	2	7,365	9,080	9,530
A	1	12,890	15,890	16,680

* Prices valid from 31 december 2017, ** upper berth

Children's Discount: 25 % until age 12 (staying in the same cabin as parents).

NORTHERN LIGHTS AND WHALES

Mystical Northern Lights

Experience Iceland on Land and Sea

Get to know the island of “fire and ice” in autumn on this special journey that gives the opportunity to witness Northern Lights and different species of whales. Look forward to a 3-day-cruise with shore excursions and interesting lectures, before an exciting bus tour along the Northwest coast and back to Reykjavik follows.

This voyage is also possible in reverse order (Tour 2).

Day 1 | Reykjavik

Our optional “Air & Ground” – package provides a convenient arrival. Use your leisure time in Reykjavik in order to get to know the unique charm of the city. Your “floating hotel” awaits you. The OCEAN DIAMOND docks in the old harbor, located in the heart of town, which is a 5 minute walk to the inner city. In the evening the ship sets course for the Snaefellsnes peninsula. Tonight you may already have a first opportunity to see the Northern Lights!

Day 2 | Stykkisholmur

In the morning the OCEAN DIAMOND reaches the small village of Stykkisholmur, the starting point for our explorations of the Snaefellsnes peninsula. Snaefellsnes is also known as “Iceland in miniature” since this region contains nearly all different kind of Icelandic scenery. In the evening the OCEAN DIAMOND leaves Stykkisholmur for the direction of the Westfjords. And again dark clear sky might offer great opportunities for the Northern Lights.

Whale fin



66°33' N POLAR CIRCLE



Northern Lights and Whales

Combination boat and bus trip

Cruise Dates 2018

Northern Lights & Whales

22 Sep – 28 Sep	180D15	(Ship/Bus)
22 Sep – 28 Sep	180D16	(Bus/Ship)

Included on ship

- Accommodation in booked cabin category
- All meals (breakfast, lunch and dinner)
- Coffee, tea and water
- Zodiac excursions (weather-dependent)
- Icelandic/English speaking guide
- All presentations from cruise staff and guest speakers
- Onboard entertainment program
- Iceland ProCruises Windjacket

Included on coach trip

- 3 nights in a typical hotel room with shower/toilet
- 3 breakfasts, 3 lunches, 2 dinners
- Icelandic/English speaking guide
- Whale Watching on RIB boat

All routes and excursions are provisional and subject to change. All Zodiac excursions are weather dependent.

For advice on gratuities see page 36.

Day 3 | Isafjörður

Today's destination is the idyllic town of Isafjörður, capital of the Westfjords region. This secluded peninsula is connected to the rest of Iceland by only a narrow strip of land. Even by Icelandic standards, the area can be described as unusually isolated. The landscape is characterized by mesas and dramatic fjords that cut deep into the landscape.

Day 4 | Husavik/Myvatn

In the early morning hours we steam into Skjalfandi Bay and Husavik. After disembarkation we explore the natural beauty of the Lake Myvatn area, including the peculiar lava formations at Dimmuborgir and the pseudo craters at Skutustadir. The pseudo craters were formed by gas explosions when boiling lava flowed over the wetlands. Last but not least we visit Dettifoss, Europe's most powerful waterfall, in the northern part of Vatnajökull National Park. Lunch will be provided on the way. Dinner and overnight in the Husavik area.

Day 5 | Akureyri/ West Iceland

Husavik is often called the "Whale watching capital" of Iceland, the town's offshore waters are home to 15 different whale species, as well as dolphins. Watching these graceful ocean giants in their Arctic habitat is an unforgettable

experience. An exciting trip with RIB boats (Rigid Inflatable Boat) to search for the gentle giants awaits you.

On our way to Akureyri we visit the impressive Godafoss, "the waterfall of the Gods". In the year 1000, the Icelandic parliament (Althing) decided to give up their pagan religion in favor of Christianity. The story goes that the idols of the ancient Nordic religion (godars) were then thrown from the top of the waterfall (foss). The cascade retains its name, Godafoss in memory of this event.

Lunch will be provided on the way.
Dinner and overnight in West Iceland.

Day 6 | Reykjavik

On our way back to Reykjavik we pass Deildartunguhver, the most powerful hot spring in the world. A stop will be made to admire the beautiful Hraunfossar waterfalls, before continuing to Thingvellir National Park, the ancient site of the world's first parliament. Our journey ends after a city tour in Reykjavik. Lunch will be provided the way. Overnight in Reykjavik.

Day 7 | Reykjavik

Individual departure.

Note: Information about our Air & Ground Packages can be found on page 32.

From GBP

1,545

per person

Prices 2018 in GBP*

Cabin Category	Occupancy	Early bird prices*	Normal prices
T**	3	1,545	1,675
P	2	1,970	2,185
P	1	2,899	3,285
O	2	2,295	2,595
O	1	3,480	3,999
D	2	2,575	2,940
D	1	3,965	4,599
B	4	2,125	2,375
B	3	2,385	2,720
B	2	3,140	3,645
A	2	3,630	4,260
A	1	5,799	6,915

* Early bird prices valid until 30 december 2017, ** upper berth





ICELAND EXCURSIONS

Discover the majesty and beauty of Icelandic nature

Enjoy a first glimpse of our 2018 shore excursions! You can look forward to many different excursion options that provide a hands-on experience with nature and a deeper look into Icelandic life.

Stykkisholmur

Snaefellsnes Peninsula

Due to its diverse landscapes, the Snaefellsnes Peninsula is often called "Iceland in Miniature." This bus excursion includes views on the Snaefellsjokull Glacier, the dramatic rock formations of Arnarstapi, Lóndrangar volcanic crater and Bjarnarhofn Shark Museum.

Snaefellsjokul Glacier

A tracked Snow Cat takes you up to 4,600 feet on Snaefellsjokull Glacier, which sits atop a 700,000-year-old dormant volcano that was featured in the Jules Verne novel *Journey to the Center of the Earth*.

Isafjordur

Sea Fishing

The waters along the Westfjords are extremely rich in marine life due to the current conditions and sustainable fisheries policies. Cod, haddock and halibut are a few of the fish you might snag on our sea angling tour.

Boat Trip to Vigur Island

While this serene little island is home to only one farm it is a habitat of countless seabirds. Vigur Island is a perfect location to observe puffins, eider ducks, arctic terns and black guillemot.

Dynjandi Waterfall in the Westfjords





Kayaking in Flateyri

Kayaking in Flateyri

Enjoy kayaking between the mountains and watch birds from a different angle amid wonderful scenery.

Thingeyri and Dynjandi Waterfall

Visit Thingeyri, one of Iceland's oldest villages, on this bus tour that also explores the Dynjandi-Waterfall, one of the Westfjords' highest and most impressive cascades.

Siglufjordur

Herring Museum and Show

Dive into the golden age of the herring boom at the award-winning Herring Museum, where exhibits and historic vessels recount the importance of herring to Siglufjordur. The show includes a herring salting demonstration as well as traditional songs and dances performed by a local theater group.



Bjarnarhofn Shark Museum

Photo: Hermann Guðmundsson

Akureyri

Lake Myvatn

Enjoy one of the most beautiful spots in northern Iceland — Lake Myvatn. The tour starts with a stop at spectacular Godafoss waterfall and continues to the small settlement of Skutustadagígar and the impressive lava formations of Dimmuborgir, said to resemble a collapsed citadel. Towards the end of the tour we visit the Myvatn Nature Baths for a relaxing geothermal soak. It's an amazing journey through an area of extreme contrasts.

Note: All shore excursions are provisional and subject to change as weather, road and other conditions may affect the itinerary. Our detailed shore excursion program (with prices) is available starting in autumn 2017 on our website: www.icelandprocruises.com



Natural geothermal bath in Myvatn

Photo: Hermann Guðmundsson



Akureyri

Wonders of National Park Myvatn

A number of Iceland's highlights are included in this excursion. The Jokulsargljufur Glacial Canyon and also the echoing cliffs Hljodaklettur and the Dettifoss Waterfall, Europe's most powerful waterfall. The tour also takes you to the Lake Myvatn area with its large population of waterfowl.

Husavik

Whale Watching by RIB Boat

An exciting on-the-water adventure by RIB (Rigid Inflatable Boat) to watch the gentle giants of the sea. The excursion also passes Lundy Island and its thousands of puffins before heading off to encounter some of the world's biggest animals.

Seydisfjordur

Seal Watching from Horseback

Introduced to the island in the 9th century, Icelandic horses are intelligent, well-tempered and versatile. Starting out from Husey farm, this two-hour guided horseback ride is a wonderful way to appreciate the beauty of the coast and mountains, as well as the birds and seals that live along this shore.

Nature Reserve Skalanes

This excursion starts with a visit to the Viking archaeological site of Thorarinsstadir, before arriving at the Skalanes Nature and Heritage Center. A private conservancy, the center's focus is on preserving Iceland's environment and cultural heritage. At the end of the tour in Seydisfjordur, we will visit the local technological museum.

Dettifoss Waterfall





Whale Watching by RIB Boat

Djupivogur

Jokulsarlon Glacier Lagoon

This tour from Djupivogur takes you to the magnificent glacier lagoon of Jokulsarlon. Huge blocks of ice constantly break off from Breidamerkurjokull Glacier, forming icebergs that float across the lagoon. Although not very big, the lagoon sinks to 750 feet (250 meters) at its lowest point, making it the deepest lake in Iceland.

Snowmobile Tour: Vatnajokull Glacier

A specially equipped 4x4 vehicle takes you up to Europe's largest glacier Vatnajokull. On the glacier you will enjoy a one hour snowmobile tour. Enjoy the stunning views over the glacier, mountain valleys and the sea. Several films and television shows have been shot on the glacier including the opening sequence in the 1985 James Bond film *A View to a Kill*.



Boat tour on Glacier Lagoon Jokulsarlon

Westman Islands

Pompeii of the North

This guided bus tour around Heimaey Island features fascinating landscapes and abundant bird life including the world's largest puffin colony. Many of the island's houses and other structures are still covered in ash or lava spewed from Eldfell Volcano in 1973. The tour ends at the Eldheimar, an interactive volcanic museum that covers the 1973 eruption, the emergence of Surtsey Island from the North Atlantic in 1963 and the geology of the Westman Islands.

Note: All shore excursions are provisional and subject to change as weather, road and other conditions may affect the itinerary. Our detailed shore excursion program (with prices) is available starting in autumn 2017 on our website: www.icelandprocruises.com.



Adventurous Zodiac tour

GREENLAND



Photo: Michele Lamerchia

Immerse yourself completely in this unique world!

The world's largest island is strikingly beautiful, a land of massive ice formations, deep-blue fjords and lush pastures. Greenland is also blessed with unique flora and fauna, the midnight sun and northern lights, and the distinctive Inuit culture.



ICELAND AND NATURAL WONDERS OF GREENLAND



Glaciers seem close enough to touch

From Iceland to Disko Bay

We discover the immense scenic and cultural variety of the world's largest island, from the beautiful and fertile south with its fascinating Viking history to the town of Ilulissat with its floating icebergs.

Day 1 | Reykjavik

Use your leisure time in Reykjavik to discover the unique charm of the world's northernmost capital. The ship departs in the evening.

Day 2 | Vestmannaeyjar (Westman Islands)

Located off Iceland's south coast, the Westman Islands were formed by submarine volcanic eruptions around 10,000 years ago. Surtsey Island emerged from the sea in 1963 and is one the youngest land masses on earth. We go ashore on Heimaey, the only inhabited island, where half-buried houses remain from a violent 1973 eruption.

Day 3 | Day at Sea / Denmark Strait

Today we sail across the Denmark Strait towards Greenland, following the same maritime route used by Norse settlers more than 900 years ago.

Day 4 | Day at Sea / Prince Christian Sound

When conditions are favorable, we cruise along the 70-mile (112-km) Prince Christian Sound. In this narrow, often ice-choked channel, we come so close to icebergs you can almost reach out and touch them.

Day 5 | Narsarsuaq

Very close to the town of Narsarsuaq lies the small settlement of Qassiarsuk, founded by the legendary Viking rebel and leader Erik the Red. He named this area "green land" because the landscape around Qassiarsuk is characterized by inviting fjords and green, fertile valleys.

Day 6 | Ikka Fjord

Today we visit Ikka Fjord. The underwater world is like no other, it contains a forest of remarkable mineral columns growing on the seabed. The columns formed over 10,000 years ago of the extremely rare mineral Ikait.

Day 7 | Nuuk

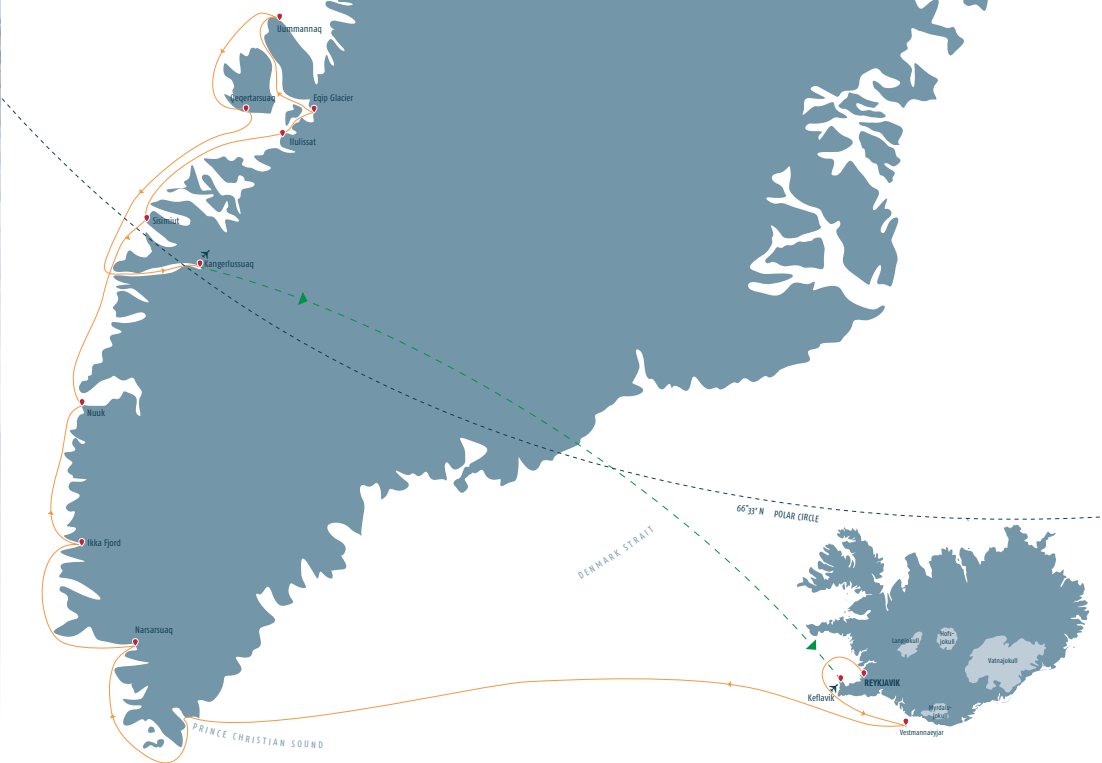
With 16,000 inhabitants Nuuk is both capital and biggest city of Greenland. It combines Arctic traditions with European urbanity. Visit the city sights on a walking tour that ends at the National Museum, which exhibits the famous mummies of Qilakitsoq.

Day 8 | Sisimiut

With approx. 5,600 inhabitants, Sisimiut is the second largest town in Greenland. It is a modern settlement that maintains ancient traditions. The fishing industry still plays an important role. The natural

Zodiac transfer in Uummannaq





Iceland and Natural Wonders of Greenland

Cruise Dates 2018

22 Jul – 2 Aug 180D9

Included

Accommodation in booked cabin category
All meals (breakfast, lunch and dinner)
Coffee, tea and water
All Zodiac excursions (weather dependent)
Icelandic/English speaking guide
All presentations from cruise staff and guest speakers
Onboard entertainment program
Charterflight Kangerlussuaq – Keflavik incl. transfer in Kangerlussuaq
Iceland ProCruises Windjacket

All routes and excursions are provisional and subject to change. All Zodiac excursions are weather dependent.

For advice on gratuities see page 36.

From GBP

2,280

per person

Prices 2018 in GBP*

Cabin Category	Occupancy	Early bird prices*	Normal prices
T**	3	2,280	2,850
P	2	3,399	4,260
P	1	5,965	7,455
O	2	4,685	5,855
O	1	8,195	10,240
D	2	5,840	7,299
D	1	10,220	12,775
B	4	4,025	5,035
B	3	5,370	6,710
B	2	8,055	10,065
A	2	9,999	12,520
A	1	17,520	21,895

* Early bird prices valid until 30 december 2017, ** upper berth

Children's Discount: 25% until age 12 (staying in same cabin as parents).

harbor remains ice-free throughout the year which made it an attractive location for European whalers in former times.

Day 9 | Ilulissat/Eqip Glacier

In the morning we reach Ilulissat village in fabled Disko Bay. Ilulissat is located beside the Ilulissat Icefjord. Delight in the thunderous spectacle when icebergs break off from the glacier and plunge into the fjord.

Day 10 | Uummannaq

Uummannaq is considered one of the most beautiful towns in Greenland. Located on a small island about 300 miles (483 km) north of the Arctic Circle, this tiny, picturesque village lies at the foot of a heart-shaped mountain.

Day 11 | Qeqertarsuaq

The small settlement of Qeqertarsuaq is located on the south coast of Disko Island. In 1773 the first whaling base was founded. Whaling has been of great importance to the town over the past two centuries. Hunting and fishing are still the primary occupations for the island's inhabitants.

Day 12 | Kangerlussuaq

In the morning we reach the 120-mile (190 km) Kangerlussuaq Fjord and the town of the same name. It's time to say goodbye to the OCEAN DIAMOND.

Note: Information about our Air & Ground Packages can be found on page 32.



Playing Soccer

Photo: Egert Johannsson

NATURAL WONDERS OF GREENLAND & ICELAND

Uummannaq, northernmost harbor of the cruise

From Disko Bay to Iceland

From majestic glaciers and icebergs floating in deep-blue water to the island's unique indigenous wild-life, the natural wonders of Greenland are the stars of this soft adventure voyage. Whales and seals often accompany the OCEAN DIAMOND, while musk ox graze ashore.

Day 1 | Kangerlussuaq

Welcome to Greenland! The OCEAN DIAMOND anchors off Kangerlussuaq and embarkation is conducted via our Zodiac boats. The ship departs in the evening.

Day 2 | Evighedsfjord/Day at Sea

Enjoy the scenery as the ship cruises through the fantastic Evighedsfjord. Learn more about the country and its people at interesting presentations provided by our knowledgeable and experienced Expedition Team.

Day 3 | Uummannaq

Uummannaq is considered one of the most beautiful towns in Greenland. Located on a small island about 300 miles (483 km) north of the Arctic Circle, this tiny, picturesque village lies at the foot of a heart-shaped mountain.

Day 4 | Eqip Glacier/Ilulissat

In the morning we visit the beautiful Eqip Glacier. Our next stop is Ilulissat, which means "iceberg" in Greenlandic. And with good reason, as the town is located at the mouth of the iceberg-filled Ilulissat Ice Fjord. Delight in the thunderous spectacle when icebergs break off from Sermeq Kujalleq glacier and plunge into the fjord.

Day 5 | Ilulissat

Enjoy the morning in Ilulissat and discover the town on one of our optional shore excursions. Ilulissat was originally founded by the Danes as a trading post in 1741.

Day 6 | Nuuk

Nuuk is the capital of Greenland and its oldest town. Founded in 1728 by Danish-Norwegian missionary Hans Egede, the city combines Arctic traditions and European urbanity. With around 16,000 inhabitants, Nuuk is considered a modern, bustling metropolis compared to the rest of Greenland. Visit the city sights on a walking tour that ends at the National Museum, which exhibits the famous mummies of Qilakitsoq.

Day 7 | Ikka Fjord

Today we visit Ikka Fjord. The underwater world is like no other, it contains a forest of remarkable mineral columns growing on the seabed. The columns formed over 10,000 years ago of the extremely rare mineral Ikait.

Arctic Landscape



Natural Wonders of Greenland & Iceland

Cruise Dates 2018

23 Aug – 3 Sep 180D11

Included

- Accommodation in booked cabin category
- All meals (breakfast, lunch and dinner)
- Coffee, tea and water
- All Zodiac excursions (weather dependent)
- Icelandic/English speaking guide
- All presentations from cruise staff and guest speakers
- Onboard entertainment program
- Charterflight Keflavik – Kangerlussuaq incl. transfer in Kangerlussuaq
- Iceland ProCruises Windjacket

All routes and excursions are provisional and subject to change. All Zodiac excursions are weather dependent.

For advice on gratuities see page 36.

From GBP

2,280

per person

Prices 2018 in GBP*

Cabin Category	Occupancy	Early bird prices*	Normal prices
T**	3	2,280	2,850
P	2	3,399	4,260
P	1	5,965	7,455
O	2	4,685	5,855
O	1	8,195	10,240
D	2	5,840	7,299
D	1	10,220	12,775
B	4	4,025	5,035
B	3	5,370	6,710
B	2	8,055	10,065
A	2	9,999	12,520
A	1	17,520	21,895

* Early bird prices valid until 30 december 2017, ** upper berth

Children's Discount: 25% until age 12 (staying in same cabin as parents).

Note: Information about our Air & Ground Packages can be found on page 32.

Greenlandic dog

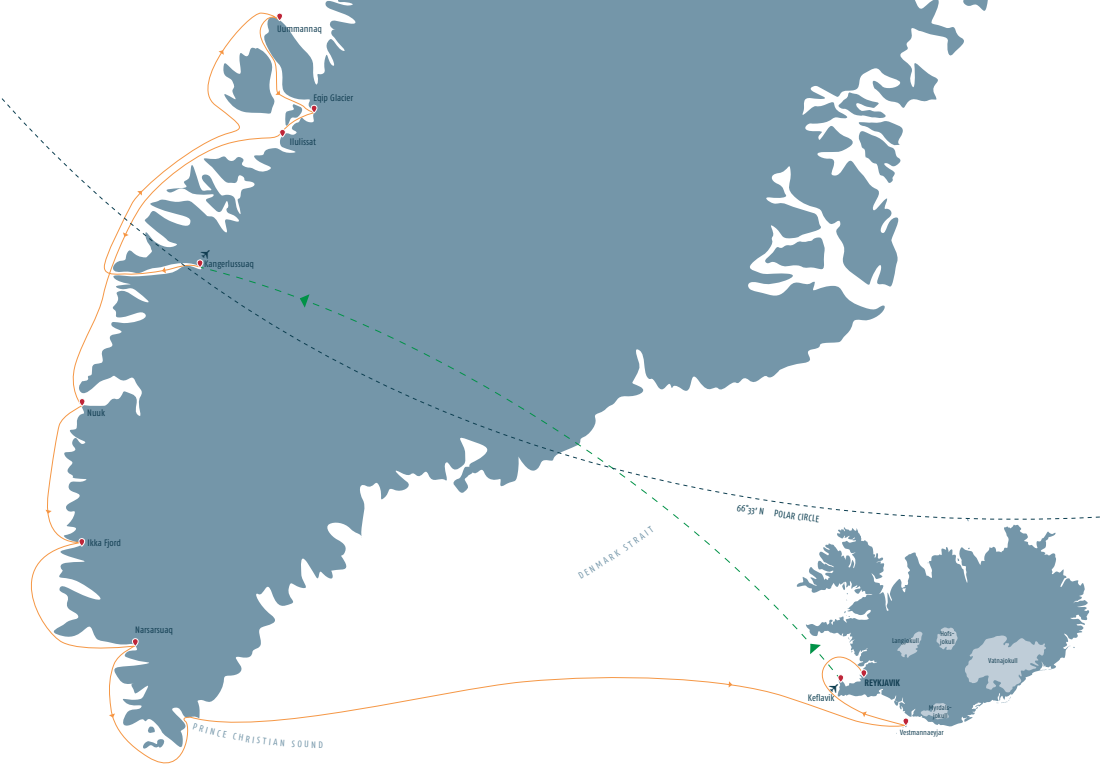


Photo: Michelle Lamsch

Fantastic icebergs

Day 8 | Narsarsuaq

Very close to the town of Narsarsuaq lies the small settlement of Qassiarsuk, founded by the legendary Viking rebel and leader Erik the Red. He named this area "green land" because the landscape around Qassiarsuk is characterized by inviting fjords and green, fertile valleys.

Day 9 | Day at Sea/ Prince Christian Sound

When conditions are favorable, we travel along the Prince Christian Sound. In this narrow, often ice-choked channel, we come so close to icebergs you can almost reach out and touch them.

Day 10 | Day at Sea

Today we sail across the Denmark Strait towards Iceland. This route was used by Norse settlers travelling to Greenland around 900 years ago.

Day 11 | Vestmannaeyjar (Westman Islands)

Located off the coast of South Iceland, the Westman Islands were formed by submarine volcanic eruptions 10,000 years ago. Surtsey Island emerged in 1963 and is the youngest place on earth. We go ashore on Heimaey, the only inhabited island of the archipelago.

Day 12 | Reykjavik

In the morning we reach Reykjavik. After breakfast it's time to say goodbye to the OCEAN DIAMOND. Want to extend your stay in Iceland? Book one of our post-tours and explore Reykjavik and the surrounding area.

GREENLAND EXCURSIONS

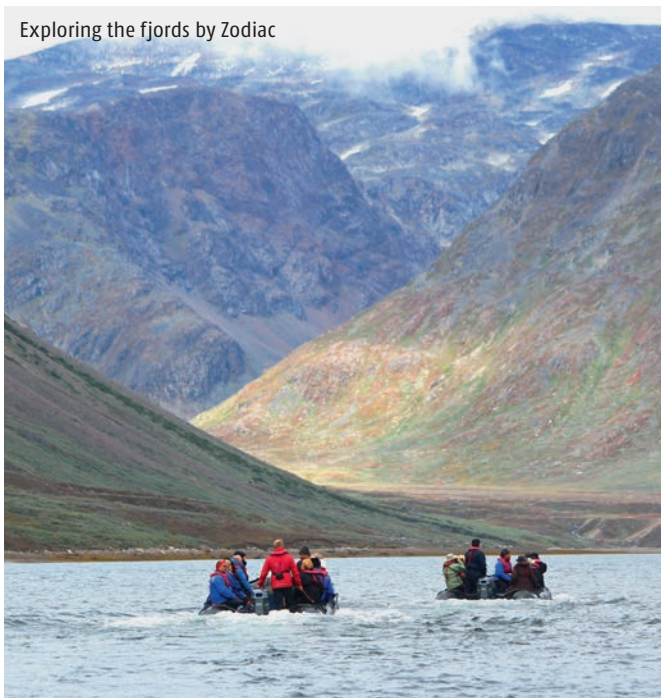
Explore the spectacular nature and culture of Greenland

Soft adventure is the emphasis of our shore excursions in Greenland, a combination of ground, water and air journeys that exude a rich understanding of the giant island, its unique peoples and incredible landscapes. Many of the excursions are naturally dependent on weather and ice conditions.

Greenland Zodiac Rides

A special feature of our cruises is excursions and landings with our trusty Zodiacs. We can use the highly maneuverable boats to reach places where larger vessels cannot go including giant icebergs and solitary bays.

Exploring the fjords by Zodiac



Ilulissat Boat Tour Through the Icefjord

Ilulissat means "icebergs" in Greenlandic and the Ilulissat Icefjord certainly lives up to that name. Take an unforgettable cruise to the mouth of the fjord, where a sunken moraine strands many of the bergs. A World Heritage Site, the fjord flows into gorgeous Disko Bay.

Ilulissat Ice Fjord



Narsarsuaq Helicopter Flight to Eqauiit Glacier

An aerial perspective gives a true sense of spectacular natural features like glaciers and icebergs. After landing at Eqauiit, you have 30 minutes to inspect and photograph the glacier face before flying back.



Iceland Pro Cruises

Hiking and Kayaking in Tasiusaq

This tour combines an 8.5-mile hike through the beautiful polar landscape with the unique experience of kayaking through ice-filled Arctic waters. Together they give a whole new perspective on glaciers and icebergs.



Nuuk

Food Tasting

Meat from marine mammals, game, birds and fish has been the main ingredient in Greenlandic food for generations. The tasting will depend on what has been caught, like a variety of fish, maybe muskox, seal and other delicacies.



Uummannaq

Uummannaq Museum tells fantastic stories about the region, in particular the history of polar research and exploration.



Note: All shore excursions are provisional and subject to change as weather, road and other conditions may affect the itinerary. Our detailed shore excursion program (with prices) is available starting in autumn 2017 on our website: www.icelandprocruises.com

AIR & GROUND

Reykjavik

Use our attractive Air & Ground packages for your arrival and departure

Air & Ground Iceland 1

(valid for all Iceland Circumnavigations)

Included:

Direct economy class flights to/from Keflavik

Taxes

r/t Airport transfers Iceland

For best available prices please contact sales agent

Air & Ground Iceland 2

(valid for all Iceland Circumnavigations)

Included:

Direct economy class flights to/from Keflavik

Taxes

r/t Airport transfers Iceland

taxi transfer from vessel to hotel in Reykjavik

Golden Circle Guided coach excursion

1 night in 4* or 3* hotels in Reykjavik incl. breakfast

For best available prices please contact sales agent

Air & Ground Iceland 3

(valid for Northern Lights and Whales)

Included:

Direct economy class flights to/from Keflavik

Taxes

r/t Airport transfers

For best available prices please contact sales agent

Air & Ground Greenland 1

(valid for Iceland and Natural Wonders of Greenland)

Included:

Direct economy class flights to/from Keflavik

Taxes

Airport transfers Iceland

1 night in a 4-star Hotel in Reykjavik incl. breakfast (double occupancy) before the cruise

1 night in a 4-star Hotel in Keflavik incl. breakfast (double occupancy) after the cruise

For best available prices please contact sales agent

Air & Ground Greenland 2

(valid for Natural Wonders of Greenland and Iceland)

Included:

Direct economy class flights to/from Keflavik

Taxes

Airport transfers Iceland

For best available prices please contact sales agent

Upgrade Economy Comfort Class (for flights with Icelandair)

For best available prices please contact sales agent

Upgrade Saga Class (for flights with Icelandair)

For best available prices please contact sales agent

Transfers

Airport Keflavik – Harbor Reykjavik – Airport Keflavik (one way fare)

For best available prices please contact sales agent

HOTELS AND RENTAL CARS

Your Hotels in Reykjavik

Fosshotel Lind

A 77 room, three-star Hotel in the center of Reykjavik, close to museums, sights and nightlife. Breakfast is included.

Double room p. p. GBP * Single room p. p. GBP *

Fosshotel Baron

Modern and family friendly, this three-star Hotel is comfortably located in the city center. It is nearby the waterfront, a short walking distance from the harbor. 120 rooms and breakfast is included.

Double room p. p. GBP * Single room p. p. GBP *

KEA-Hotel Storm

This popular three-star Hotel is located nearby the major shopping street Laugavegur. 93 rooms and breakfast is included.

Double room p. p. GBP * Single room p. p. GBP *

KEA-Hotel Reykjavik Lights

This 105 room concept design hotel (three stars) is located nearby the botanical garden. Breakfast is included.

Double room p. p. GBP * Single room p. p. GBP *

KEA-Hotel Skuggi

The new three-star hotel with a modern interior has 100 rooms. It is located east of the old town of Reykjavik. Breakfast is included.

Double room p. p. GBP * Single room p. p. GBP *

Hotel Klettur

With 86 modern rooms, this three-star hotel is located near Reykjavik's old town, 20-minutes walking distance from the city center. Breakfast is included, although there is no restaurant on site for lunch or dinner.

Double room p. p. GBP * Single room p. p. GBP *

Fosshotel Reykjavik

This four-star Hotel is centrally located nearby the shopping street. The hotel is an ideal starting point for a city stroll through Reykjavik. A large hotel with 320 rooms and breakfast is included.

Double room p. p. GBP * Single room p. p. GBP *

Hotel Holt

This four-star Hotel has a lovely private art collection and is a member of the WorldHotels chain. It is located a short walking distance (5 min.) to the old town. 40 rooms and breakfast is included.

Double room p. p. GBP * Single room p. p. GBP *

Grand Hotel

This modern four-star hotel is located about 1.5 miles from the city center and is very close to Laugardalur Park. The hotel offers free transfers to and from downtown. A large hotel with 311 rooms, breakfast is included.

Double room p. p. GBP * Single room p. p. GBP *

* For best available prices please contact sales agent.

Extend your stay and explore Iceland by rental car

Europcar

Price examples per day in GBP

Category	Shoulder Season	Main Season
B (e.g. VW Golf)	*	*
F (e.g. Suzuki Grand Vitara 4x4)	*	*

If you want to explore Iceland on your own.

Car rentals are available before, after and during your cruise at the following cities: Isafjordur, Stykkisholmur, Akureyri, Husavik, Reykjavik and Keflavik Airport (one way rental fee on request).

* For best available prices please contact sales agent.



PRE AND POST PROGRAMS

Seljalandsfoss Waterfall

Iceland

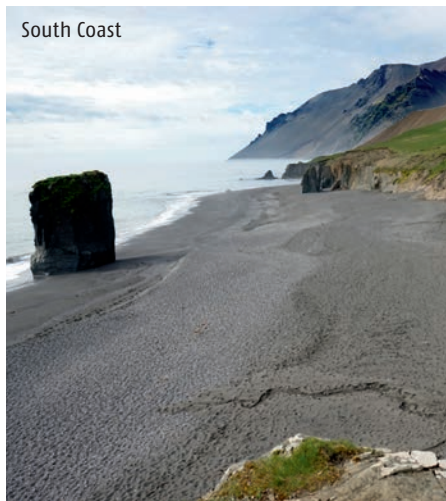
Why not stay a little longer? Our pre- or post-cruise programs perfectly complement your voyage on the OCEAN DIAMOND. Whether it's a self-drive car trip, additional hotel nights or a helicopter tour to one of the largest waterfalls in Iceland, you design your ultimate Iceland adventure.

South Coast Adventure

On this comfortable coach tour, we travel along Iceland's scenic south shore to Vik, a village flanked by high cliffs and black sand beaches. Along the way we stop at Skogafoss and Seljalandsfoss waterfalls, and Skogar Folk museum to see how Icelanders lived in past centuries. All day long there are stunning views of glaciers, coastlines and impressive rock formations.

Duration: Approx. 10 hrs

South Coast



Golden Circle

This eclectic journey takes visitors to the world famous Geysir area with its active geysers and Gullfoss waterfall, which plunges 230 feet (70 meters) in three stages into a narrow rock chasm. The journey continues into Thingvellir National Park, where Iceland's ancient parliament convened, and the hot spring of Nesjavellir. On the way back to the capital, we briefly stop at the former bishopric of Skalholt and visit the greenhouses of Fridheimar.

Duration: Approx. 8 hours

Silver Circle Helicopter Tour

Taking off from Reykjavik, the helicopter glides above Hvalfjordur Fjord and impressive Glymur waterfall, which cascades 640 feet (195 meters) down a volcanic cliff. We then fly into Thingvellir National Park (a UNESCO World Heritage Site) to get a bird's-eye-view of the rift valley that separates the North American and Eurasian tectonic plates. Finally we soar over Mt. Hengill volcano and its active geothermal field of steamy wonders and nearby geothermal power plant.

Duration: Approx. 1.5 hrs

Super-Jeep Safari Thorsmork

With its varied vegetation and spectacular topography, Thorsmork is a paradise for hikers and nature enthusiasts. Located near the south coast, the valley is surrounded by three glaciers including the famous Eyjafjallajökull. To reach this remote area we need to cross countless rivers of various sizes in our Super-Jeep vehicle – a bonus for off-road fans! Other stops along the way include Gígjökull glacial lagoon, the Seljalandsfoss waterfall and the active volcanic area around Hengill.

Good footwear is a prerequisite.

Duration: Approx. 8-10 hrs

Super-Jeep Safari Highlands Region Landmannalaugar

This audacious tour starts with a rough and tumble ride in specially equipped 4x4 vehicles into the Thjorsa Valley to explore the colorful highland area of Landmannalaugar. Hiking trails lead into the surrounding mountains and along the banks of Ljotipollur crater lake. There's also time to enjoy a dip in one of the freshwater springs which dot this amazing landscape.

Duration: Approx. 10-12 hrs

Inside the Volcano

Have you ever wondered what the inside of a volcano looks like? On this adventure unique to Iceland, visitors descend into the 4,000-year-old, dormant Thrihnukagigur Volcano. After a 50-minute hike along the crater floor, visitors descend via an open elevator 400 feet (192 meters) into a magma chamber once filled with glowing hot lava. Due to rough terrain, participants are advised to wear solid footwear as well as warm, waterproof clothing.

Duration: Approx. 5-6 hrs

Note: Prices for our pre and post programs can be found on our website www.icelandprocruises.com from autumn 2017.

Photostop



ICELAND ROAD TRIP

Ingjaldsholskirkja, Snaefellsnes peninsula

South and West Iceland

Explore the sights of south and west Iceland on this self-drive road trip into the world of geysers, black beaches and the legendary Borgarfjord with its "lava waterfalls." Overnights are spent in typical country inns as well as farms and guesthouses.

Day 1 | Arrive Reykjavik aboard OCEAN DIAMOND

After disembarkation fetch your vehicle from the harbor car rental office. Leave the capital behind as you drive towards the south coast. First two nights in a typical Icelandic country inn.

Day 2 | South Coast: Waterfalls and Black Beaches

Highlights today include the spectacular Seljalandsfoss and Skogafoss waterfalls. With the frozen slopes of Myrdalsjokull glacier as a backdrop, admire the black beaches of Vik and dramatic cliffs of Cape Dyrholaey. En route visit the "Iceland Erupts" volcano exhibit at Thorvaldseyri Visitor Center.

Day 3 | Geysers, Gullfoss and Norse Heritage

Get an early start for the Haukadalur geothermal field and the world famous Strokkur geyser and

Gullfoss waterfall. Then make your way to historic Thingvellir National Park, where Iceland's ancient parliament (the Althing) met between 930 and 1799 AD. The day ends near Borgarfjord on the west coast with an overnight in another typical Icelandic country inn.

Day 4 | West Coast: Borgarfjord to Reykjavik

Borgarfjord is home to Hraunfossar waterfall as well as the earth's largest hot springs – Deildartunguhver. Driving via the Hvalfjordur, you should reach Reykjavik around noon. Spend a couple of hours exploring the Icelandic capital with its Nordic charm before dropping off your rental car and overnighting in Reykjavik.

Day 5 | Return Journey

Individual departure.

Note: Your rental car tour is also bookable from/to Keflavik Airport.

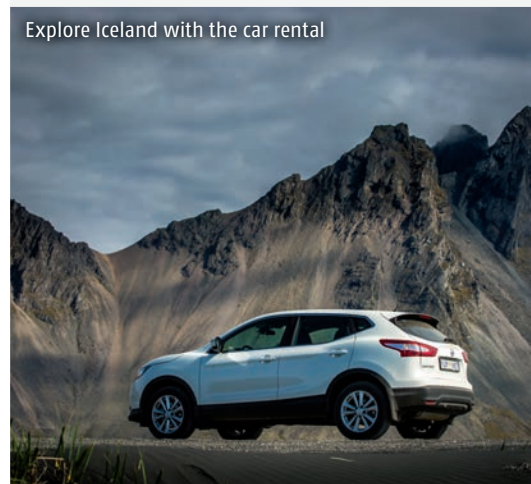
Rental Car Tour South and West Iceland

Includes

4 overnights including breakfast in double room with private bath in typical Icelandic accommodation

Detailed itinerary and street map.

For prices please visit
www.icelandprocruises.co.uk



Note: Program and itinerary are subject to modifications

PRACTICAL INFORMATION



BBQ Party at the Pool Deck

Alcohol

Bringing alcohol aboard is generally not allowed. The only exception is a small "corkage fee" charged to passengers who want to enjoy a special bottle of wine with a meal. A large variety of alcoholic and non-alcoholic drinks are served on board in the restaurant and bar.

Cabin Features

All cabins are equipped with shower/toilet, television, closet, refrigerator, hairdryer and access to satellite phone. Cabins are cleaned daily and there is turn-down service. In case of illness, food and drinks can be served in the cabin during dining hours.

Changes to Cruise Itinerary & Shore Excursions

Due to local weather, sea and ice conditions, all of our cruise itineraries and shore excursions are subject to change. The implementation of our shore excursions also depends on reaching the minimum/maximum number of participants for each activity. Iceland ProCruises reserves the right to change the itinerary and trip content without prior notice.

Children

Children must be 8 years or older (10 years or older on trips that combine Greenland and Iceland). Discounts of 25% on cruises and shore excursions are offered to children up to age 12 staying in their parents' cabin. Please note that we do not offer child-care services or children's play areas on board. Riding our Zodiacs requires a certain level of body control. Due to safety reasons, the captain reserves the right to refuse a landing with children.

Cruise Card

At embarkation you will receive a personal Cruise Card which you should always have with you. This card is used on board as a combination payment instrument (except in the onboard shop) and identity card. Shore excursions, alcoholic beverages, spa services etc. will be paid with your cruise card. At the end of the voyage you can settle your account by credit card (we accept Visa, MasterCard and American Express) or you can pay with cash (US\$).

Dress Code

The dress code on board is casual. Leave your ties, jackets and evening dresses at home. For days at sea and ashore we recommend comfortable, breathable, waterproof and windproof clothing, plus gloves, thermal underwear and sturdy footwear. For the captain's and farewell cocktail parties we recommend smart casual dress style.

Gratuities

Tipping is a way of showing your appreciation for a service received on board from the hotel staff or expedition team. The amount of the gratuity is totally at your discretion. During the voyage we hand out a flyer about the handling of tips. For your convenience, we can charge the suggested gratuity to your onboard account. If you would like to cancel or make adjustments to the gratuity posted on your account, you can do so by visiting the reception desk. Gratuities are divided amongst the hotel crew and expedition team.



Relax with piano background music

Health & Medical Emergency

Although we do not have an official requirement regarding personal fitness, you should be able to move on board and ashore without the help of others. At all times there is an English-speaking doctor on board. The ship is equipped with a small clinic and medications to treat certain emergencies.

Insurance

Repatriation costs in case of illness can be extremely high. Therefore, we strongly recommend purchasing travel/health insurance prior to your voyage, specifically policies that cover repatriation costs to your home country. Information on all-inclusive insurance packages – including travel cancellation, curtailment, baggage and medical – can be found on the websites of various providers.

Internet & Phone

Iceland ProCruises offers free WiFi in the public areas of Clublounge, Observation Lounge and Library during Iceland Cruises. There is no free WiFi in those areas during Greenland Cruises. For an extra charge we offer internet access in your cabin. Mobile-phone reception should be possible in most regions along our route. For further details please contact your mobile phone operator. A telephone deposit for external phone calls as well as an internet deposit for your laptop or tablet can be purchased at the reception. Please ensure that your 'Data Roaming' facility is switched off.

Language Onboard

English is the official language on board. Therefore all members of our expedition team and the reception staff speak English (as well as German). Onboard announcements are made in English and German. The daily program as well as the dining room menu are also bilingual (English and German). If you require translation, our multi-lingual expedition team is always at your disposal.

Laundry

Professional laundry service is available for an additional charge.

Passports & Visas

Each passenger is responsible for ensuring that he/she meets the applicable passport and visa requirements for the duration of the trip. The passport is the only valid proof of identity for all trips with the Ocean Diamond. An ID card is not sufficient. The passport must be valid for at least 6 months after your trip ends. Please note that each participant is responsible for obtaining all necessary documents. Costs incurred due to insufficient travel documents must be paid by the passenger.

Physical Disabilities & Accessibility

Guests with physical disabilities are recommended to travel with an accompanying person. The particular processes on board should be handled without external help. The gangway can be – depending on the individual disability – a challenge. The angle of inclination of the gangway varies due to tide and different circumstances in the respective port. Please note that the guest's participation in shore excursions as well as the (dis-)embarkation by zodiac can be denied by the master due to security reasons. The instructions of the master must be followed. The ship is not suitable for wheelchairs.

Restaurant/Dining

Breakfast, lunch and dinner are included in your cruise price. Breakfast and lunch are buffet style; dinner is à la carte. Coffee, tea and water are free during the entire voyage; other drinks can be purchased in the restaurant or bar. If you're not on board at lunch time, we prepare a lunch box for you to take ashore. In the afternoon we offer tea and coffee in the lounge on Deck 4, which is also the venue for our late-night snack.

Safety

The ship complies with all safety requirements and is certified for travel in Arctic waters. Before departure, all passengers receive instructions in on-board safety procedures and operations including the location of lifejackets in your cabin. Familiarize yourself with the ship's evacuation plan. Special safety procedures apply to trips in the Zodiacs.

Shop

Besides Icelandic souvenirs and postcards, our onboard shop offers a small range of cosmetics and other articles for daily use. All major credit cards are accepted (Visa, Mastercard, AmEx). Cash payment is possible in US\$ and EUR.

Smoking

For safety reasons and to protect the health of our guests and employees, smoking is permitted only in the designated smoking area on the outside deck. Do not throw your cigarette butts overboard but use the ashtray. Smoking is strictly prohibited in all cabins, on balconies and in all other locations on the ship.

Special Requests Dietary

Please inform us about any special dietary needs (e.g. vegetarian or gluten free, diabetic food) at least two weeks before departure. In order to ensure efficient service, please re-confirm your requirements with the crew after boarding the ship.

Tap Water

The tap water on board is completely safe and drinkable.

Vaccinations

Ask your local health authorities about recommended vaccinations.

Voltage

All cabins are equipped with 220 volt (2-poles) outlets.

Zodiac Landings

One of our features are landings and excursions with our motorized rubber boats of the brand "Zodiac". The boat has both a low draught and a big stability. Zodiac vests are mandatory to wear. Zodiac-landings generally depend on local circumstances. In each case the master makes the final decision if the landing is realizable or not. Particular safety regulations apply on landings. All guests receive a mandatory instruction of the security guidelines.



OCEAN DIAMOND



OCEAN DIAMOND in Greenland



Restaurant Deck 4



Library deck 5

Thanks to two stabilizers that significantly reduce roll and an ice-strengthened hull, the OCEAN DIAMOND is the ideal ship for exploring the waters around Iceland and Greenland.

Due to its compact size, the OCEAN DIAMOND can enter fjords and bays too shallow for larger vessels. With 107 cabins, the ship features a range of modern onboard amenities and is staffed with outstanding officers and crew, as well as bilingual expedition leaders and guides.

The ship's Zodiacs are available for shore excursions. After a busy day of exploration, passengers can browse books in the well-stocked Polar Library, savor a health or beauty treatment in the onboard Spa, or enjoy views of the spectacular Arctic scenery from the Panorama Salon.

Vessel:

Flag:	Bahamas
Built/Refurbished:	1974/1986/2012
Crew:	106
Guests: max	199
Ice Class:	1D
Length:	124 m
Width:	16 m
Draught:	4.9 m
Max speed:	15 knots
Voltage:	220 V

The Cabins



A – Balcony Suite Deck 7

Balcony Suites, around 30 square meters/323 square feet in size, offer a double or twin beds and a private bathroom with shower. A sitting area with TV, wardrobe and refrigerator makes your stay even more pleasant. Additional amenities include individual temperature controls, hair dryer and satellite telephone access. Enjoy the view from floor-to-ceiling windows or a balcony that can be accessed via a sliding door. All suites of this category were redecorated in 2015.



B – Outside Cabin XL / Picture Window Deck 4

Our spacious XL Cabins offer 37 square meters/398 square feet of space, including a double bed or twin beds and two sofa beds that also provide day-time seating. Each of the two rooms also boasts their own private bathroom with shower. Enjoy the cruise with your family or friends in a sitting area equipped with TV, wardrobe and refrigerator. Among the other amenities are individual temperature controls, hair dryer and satellite telephone access. Large picture windows offer fantastic views of the North Atlantic and the Iceland or Greenland coasts.



D – Outside/Picture Window Deck 5 and 6

Renovated in 2016, outside cabins in Category D measure 17 to 19 square meters/183-205 square feet each and come with double bed or two twin beds as well as private bathroom with shower. The cabin also includes TV, wardrobe and refrigerator. Further amenities include individual temperature controls, hair dryer and satellite telephone access. A picture window provides great unrestricted views of the ocean and landscapes. All cabins on deck 5 and 6 were redecorated in 2016 and 2017.



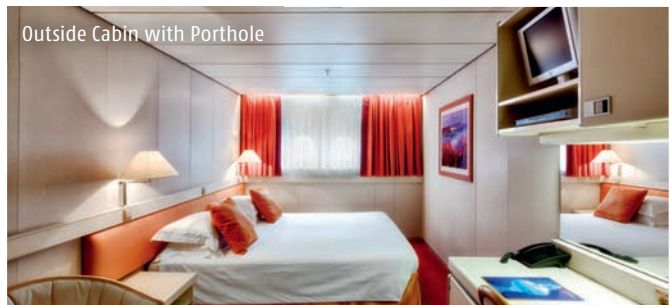
D – Outside/Picture Window Deck 4

Category D cabins on deck 4 are equipped with a double bed or two twin beds as well as a private bathroom with shower. Totalling between 17 and 19 square meters/183-205 square feet each, they also feature TV, refrigerator, wardrobe, individual temperature controls, hairdryer and satellite phone access. The panoramic windows in these staterooms give guests unrestricted ocean and landscape views.



O – Outside/Obstructed View Deck 5 and 6

Outside cabins in Category O are around 19 square meters/205 square feet and feature a double bed or two twin beds as well as a private bathroom with shower. Each cabin is equipped with TV, wardrobe, refrigerator, individual temperature controls, hair dryer and satellite telephone access. The view through the picture window is obstructed e.g. by the ship's lifeboats.



P – Outside/Porthole Deck 3

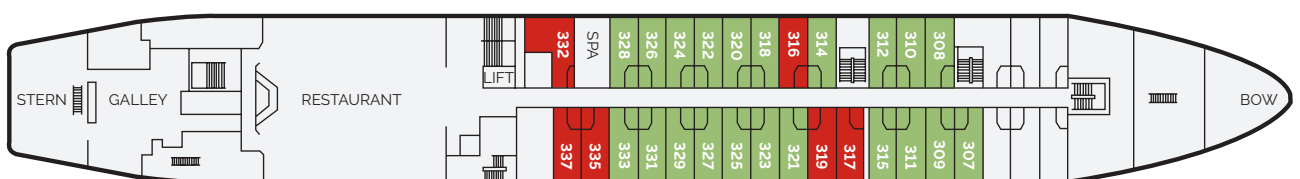
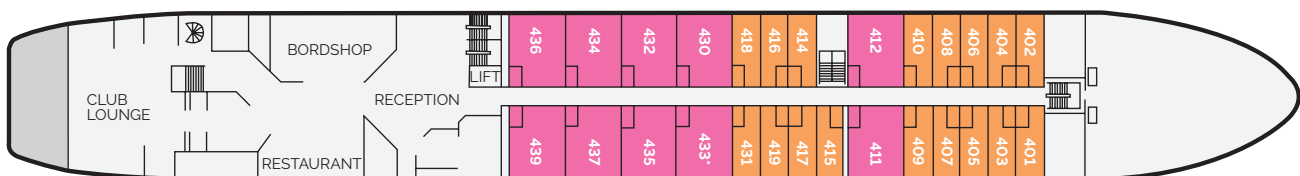
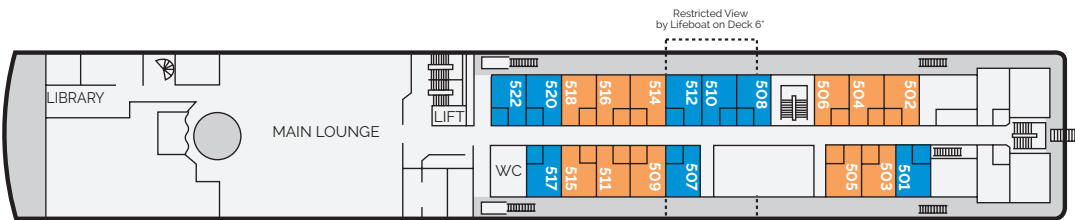
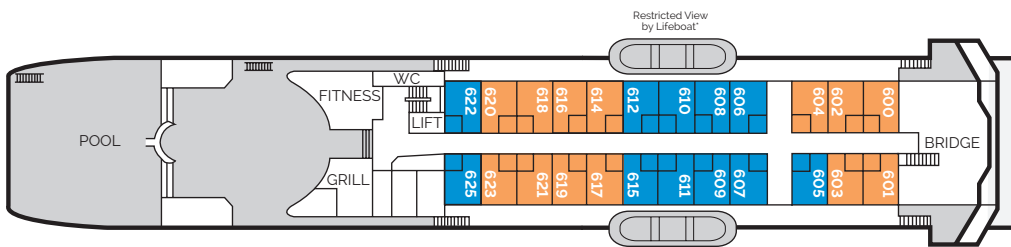
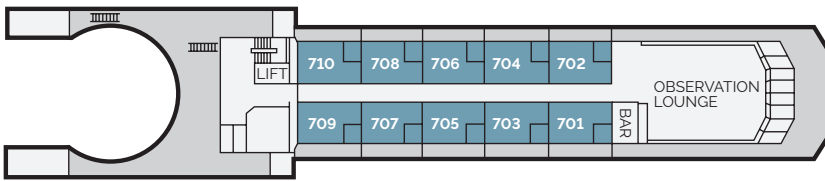
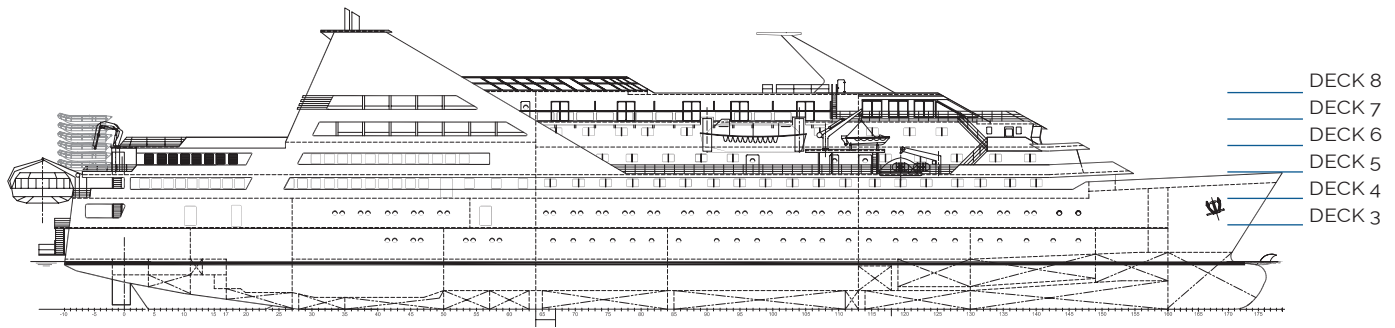
Outside cabins in this category feature a double bed or two twin beds and a private bathroom with shower. With 19 square meters/205 square feet they are roomy and feature TV, wardrobe, refrigerator, individual temperature controls, satellite telephone access and hair dryer. Enjoy the North Atlantic seascape outside through two portholes.



Cabin Features

Category	Type	Cabin Features	Size	Deck
A	Balcony Suite	Double or twin beds, shower/WC, sitting area, TV with DVD player, wardrobe, refrigerator, air conditioning, satellite phone, hairdryer, floor-to-ceiling window with sliding doors, balcony	Ca. 30 m ² / 323 sq. ft.	Deck 7
B	Outside Cabin XL	Double or twin beds + 2 sofa beds, 2 bathrooms with showers/WCs, sitting area, TV with DVD player, wardrobe, refrigerator, air conditioning, satellite phone, hairdryer, panoramic windows, 2 rooms with connecting door	Ca. 37 m ² / 398 sq. ft.	Deck 4
D	Outside Cabin	Double or twin beds, bathroom with shower/WC, TV with DVD player, wardrobe, refrigerator, air conditioning, satellite phone, hairdryer, panoramic windows	Ca. 17-19 m ² / 183-205 sq. ft.	Deck 4 + 5 + 6
O	Outside (Restricted View)	Double bed or twin beds, bathroom with shower/WC, TV with DVD player, wardrobe, refrigerator, air conditioning, satellite phone, hairdryer, picture windows (restricted view)	Ca. 19 m ² / 205 sq. ft.	Deck 5 + 6
P	Outside (Porthole View)	Double bed or twin beds, bathroom with shower/WC, TV with DVD player, wardrobe, refrigerator, air conditioning, satellite phone, hairdryer, 2 portholes	Ca. 19 m ² / 205 sq. ft.	Deck 3
T	Triple Cabin	2 lower beds and 1 upper bed, bathroom with shower/WC, television with DVD player, wardrobe, refrigerator, air conditioning, satellite phone, hairdryer, 2 portholes	Ca. 19 m ² / 205 sq. ft.	Deck 3

Deck Plan



* Cabin 433 without connecting door

Booking Conditions

These are the terms and conditions which apply to your holiday with Iceland Pro Cruises Island Ehf. (here after IPC) please read them and the information carefully as you will be bound by them.

1. Contract

Your contract is with IPC, a company wholly owned by Iceland ProTravel Holding Ehf., on the basis of these conditions and the information contained in the brochure and Homepage, and shall be governed by English law and the jurisdiction of the English Courts. You may however choose the law and jurisdiction of Scotland or Northern Ireland if you wish to do so. When you book a cruise holiday with us the contract between us will exist as soon as you or your travel agent asks us to confirm your booking. We then become responsible to provide you with the voyage arrangements you have booked and you become responsible to pay for them, in each case subject to these terms and conditions. You will also become responsible to pay for any additional arrangements made by us on your behalf including international flights not included in any air package, optional excursions, travel insurance or other arrangements requested by you and booked.

You guarantee you have the authority to accept and do accept on behalf of your party the terms of these booking conditions when you make a booking. You also accept responsibility for making all payments to us for all members of the party. We are unable to accept provisional or conditional bookings. We will send all documents and other information to you and you will be responsible for ensuring that all other members of the party are kept fully informed. On receipt of your deposit we will send you a confirmation invoice which you should check as soon as you receive it. If you wish to change or cancel any arrangements later you may have to pay an amendment or cancellation charge and additional costs (see below) which may be as much as the whole of the original price of your arrangements.

Only one invoice and one set of documents will be issued. No verbal amendments may be made by either party to these written booking conditions; any change must be in writing.

If your confirmed arrangements include a flight, we (or if you booked via an authorized agent of ours, that agent) will send you an ATOL Certificate and a confirmation. Upon receipt, if you believe that any details on the ATOL Certificate or confirmation or any other or any other document are wrong you must contact us immediately.

If you book your holiday through a travel agent all communication must be through that agent. All monies you pay to the travel agent are held by the travel agent on our behalf at all times.

You are responsible for complying with any Visa or other entry requirements for you or any of your party who are not full European Union Passport Holders.

2. Financial Protection

We hold an Air Travel Organised License granted by the Civil Aviation Authority under number 7634. When you buy an ATOL protected flight or flight inclusive holiday from us you will receive an ATOL Certificate. This lists the flight, accommodation, car hire, voyage and/or other services that are financially protected, where you can get information on what this means for you and who to contact if things go wrong. In the unlikely event of our insolvency the CAA will ensure that you are not stranded abroad if you have booked a cruise holiday from this brochure and will arrange to refund any money you have paid to us for an advance booking. For further information visit the ATOL website at www.atol.org.uk. If you book arrangements other than an air package holiday from this brochure your monies are protected by our bond held with ABTA. We are also a member of the Association of British Travel Agents, tour operator class ABTA Y606.

3. Payment

The total price of the arrangements you have booked is due and payable once you have asked us to confirm your booking as follows:

a. If you book more than 60 days before your scheduled departure date a non-refundable deposit of 20%. The balance is due 80 days before your scheduled departure date. No second invoice will be sent. Travel documents will be issued 15-30 days prior to departure.

b. If you book less than 60 days before your scheduled departure date the full price is payable when you book. Our preferred method of deposit payment is by bank transfer, debit - or credit card. Balance payment may be made by bank transfer, debit card, credit card or cheque (providing there is time to clear to meet the payment schedule shown above).

- you should allow 5 working days for clearance from the time we receive it

Online Bookings

Bookings made online that cost less than £ 935,- or made within 60 days of departure require full payment at the time of booking and no refund is made if cancelled.

Credit Card Charges

No charge will be made for deposits or balances paid by Debit Card/Switch/Delta. In line with most major operators we will make a charge of 3 % for deposits and balances paid by credit card until 12th of January 2018. After that date NO Credit Card charges apply. Your booking may be cancelled if you do not make payment on time (we will not normally send reminders) and cancellation charges as set out under "If You Cancel" (see below) will be payable by you.

4. a Prices

All Voyage prices in this brochure are available in pounds sterling and USD Prices are per person based on full occupancy of the cabin accommodation unless otherwise stated. Single/Sole occupancy of cabins with more than one berth is at our discretion as single/sole use of multiple berth cabins will be limited. The GBP price of your voyage arrangements was calculated using exchange rates quoted by Landsbanki in Iceland on 15.05.2017 in USD to British pound (GBP) 0.8. We reserve the right to make changes of any of the prices quoted in this brochure although there will be no change within 30 days of your departure date. You will be advised of the current price of the voyage or air package holiday you wish to book before your contract is confirmed. We reserve the right to increase or decrease prices in line with any change in VAT, local and UK taxes, embarkation/disembarkation fees, fuel surcharges, exchange rates, security charges or any fees chargeable for the services included in the cost of your holiday.

Should it be necessary to make any surcharges we will notify you of the relevant adjustments by issuing a new invoice. In any event we will absorb all such increases where they form less than 2% of the total cost of your voyage or air package holiday (excluding any cancellation or amendment charges). Only amounts in excess of 2% will be invoiced to you, together with an administration charge of £1.00 per person together with an amount to cover agent's commission.

In the event that any surcharge means you paying in excess of 10% more on the original cost of your cruise, you will be entitled to cancel your trip with a full refund of all monies paid (except amendment fees). Should you want to cancel under these circumstances you must exercise your right to do so within 14 days from the date of the invoice we send you showing the increase.

Should the price of your cruise go down due to changes above by more than 2% of your holiday cost then any refund due will be paid to you. Please note that travel arrangements are not always purchased in local currency and some apparent changes have no impact on the price of your travel due to contractual or other protection in place.

4.b Voyage and Air and Ground Package Prices Do Not Include

- Travel Insurance
- Luggage Handling
- International Flights except flights included in the Air and Ground Package
- Optional Excursions
- Gratuities

Optional excursions booked before you travel or local excursions or other activities that you may choose to book and pay for whilst on holiday are not part of your cruise provided by us nor are we agents for the provider of the service. For any excursion or other activity you book before departure or whilst you are assisted in arranging whilst on holiday, your contract will solely be with the supplier of the excursion or activity and not with IPC. We are not responsible for anything that happens during the course of its provision by the supplier nor for the provision of your excursion or activity.

5. Changes in Your Booking

If you wish to change your travel arrangements after they have been confirmed we will do our utmost to help but it may not always be possible. Any request for changes to be made must be in writing by the person who made the booking or your travel agent. You will be asked to pay an administration charge of £ 40 per person and any further cost we incur in making this alteration. NB: most airlines will charge a fee for ticket changes. Costs may increase the closer to the departure date that changes are made.

If you change the number of people in your party, the price of the arrangements will be recalculated for the new party size, this may mean that accommodation is under-occupied and each member of the party may have to pay an increased price.

Any increase in price caused by changes you have requested is not a cancellation charge even though it may arise because a member of your party has cancelled. Any change by you to your confirmed arrangements after departure is in all cases subject to availability and any relevant costs.

6. Cancellation

You, or any member of your party, may cancel your travel arrangements at any time. Written notification from the person who made the booking or your travel agent must be received at our offices. We recommend 'Recorded Delivery'. Cancellation takes effect the day we receive your letter or email. Since we incur costs in relation to your arrangements from the time we confirm your booking you will have to pay the applicable cancellation charges as shown in the table below (which also applies if we cancel because you have failed to make payments on time - see "Payment" section) together with the cost of any air fare for which we have had to pay at the time of the booking and will be payable immediately on cancellation.

Number of days prior to departure:	CANCELLATION FEES IN PERCENTAGE OF TOTAL BOOKING PRICE:
More than 90 days before:	
90-60 days before	20%
60-45 days before	30%
45-30 days before	60%
30-15 days before	90%
Less than 15 days before	100%

7. We Change or Cancel Your Booking

We reserve the right to change any of the details, and correct any errors in this brochure; homepage or invoices at any time. We will advise you before we confirm your arrangements if changes are made before you have made your booking. We reserve the right in any circumstances to cancel your travel arrangements (for example if per 30.12.2016 a minimum number of 1000 participants for the entire voyage in the season or per 31.3.2017 100 participants per voyage is not reached, we may have to cancel it) and to change airline, aircraft types, vessels and itineraries without liability for any subsequent loss. Even after we have confirmed your booking we may have to make changes but we will not cancel your travel arrangements less than 60 days before your departure except for reasons of force majeure or failure by you to pay the final balance in full.

Most alterations will be minor. While we will do our best to notify you or your travel agent of any changes as soon as reasonably possible if there is time before your departure, we will have no other liability to you.

Occasionally we may have to make a significant change to your confirmed arrangements.

Significant changes include the following:

- Change of UK departure airport. A change from one London airport to another is not considered a major change. London airports are Heathrow, Gatwick, Stansted, Luton and London City.
- Change of your time of departure or return by more than 12 hours.
- Change of your flight from a day flight to a night flight if this also includes a change to your departure time of 3 hours or more.
- Change of destination

For the purposes of the contract night flights are those which depart from the UK between 2200 and 0600 hours or arrive in the UK between 2400 and 0600 hours.

We will inform you as soon as possible and you may either if we have to make a significant change:

(a) accept the change and the contract between us will then be varied to incorporate the change; or

(b) take alternative arrangements altogether (subject to availability). If the alternative arrangements selected are a lower price than those originally confirmed the difference will (if already paid) be refunded to you.

(c) withdraw from the booking completely in which case we will as soon as possible, refund all money paid to us.

Passengers must give notice of their decision as soon as reasonably possible and not later than 7 days of being informed of the changes.

If you choose (a) or (b) above, you will receive as compensation a credit towards the cost of your arrangements, or any alternative selected, the amount mentioned below. If you choose (c) we will pay you compensation. In all cases we will have no liability for any other or greater compensation or for expenses or losses incurred.

Your compensation is maximum £ 40.

The compensation does not apply when we are forced to make changes which cause you to withdraw or cancel your arrangements, by reason of unusual and unforeseeable circumstances beyond our control and which we could not have avoided by the exercise of all due care and our only liability will be to refund, as soon as possible, all money paid to us by you. We are unable to accept liability or pay compensation where the performance or prompt performance of our contractual obligation is prevented or affected by reason of circumstances amounting to "force majeure" i.e. any event which we or the supplier(s) of the service(s) could not, even with due care foresee or avoid. Such events may include, but aren't limited to, war, threat of war or civil commotions, riots, terrorist activity, industrial dispute, natural or nuclear disaster, adverse weather, fire, flood, drought, government action, airport and port regulations and closures, technical transportation problems, maintenance to vessels, scheduling of transport and similar events outside our control.

A flight or ship delay does not constitute a change to holiday arrangements.

8. Complaints

If you have a problem during your holiday concerning any service we have confirmed you must inform the local supplier, e.g. your hotelier, or our local representative or agent immediately to enable them to try to resolve the matter. You are also obliged to act in a way so as to minimize any loss. If the issue can not be resolved locally you notify our head office in writing, quoting the booking reference number, at the earliest opportunity and no later than 28 days after your return, to enable any complaint to be investigated. It is strongly recommended that you communicate any complaint to the supplier of the services in question without delay and obtain a written report. If you fail to follow this procedure we will have been deprived of the opportunity to investigate and rectify your complaint at the time and this may affect your rights under this contract. Any accident resulting in personal injury, loss of, or damage to luggage must be reported to a ship's officer or airline official immediately and written confirmation obtained. We are unable to accept liability for the contents of DVDs, videos, literature, or websites produced by our suppliers/hoteliers. In the unlikely event that any complaint cannot be settled between us as you may if you wish be referred to arbitration. This special scheme, by arrangement with ABTA is administered by CEDR Solve. It applies if your claim is for not more than £5,000 per person or £25,000 per booking and does not involve physical injury or illness. The scheme provides for a simple and inexpensive method of arbitration conducted privately based on written documentation and evidence with limited customer liability on costs. Full details are available on request or from ABTA Ltd, 30 Park Street, London SE1 6EQ, www.abta.com.

9. Liability

We accept liability for any damage caused to you or any person in your party by the failure to perform, or the improper performance of, the cruise arrangements when your booking is confirmed (subject to any changes subsequently agreed between us) (but excluding any additional arrangements or extras whether or not purchased at the same time as defined in paragraph 4b) unless:

(a) the failures which occur in the performance of the contract are attributable to you or some other person in your party;

(b) such failures in performance are attributable to a third party unconnected with the provision of the services contracted for and are unforeseeable and unavoidable

(c) such failures are due to:

- 1) unusual or unforeseeable circumstances beyond our control, the consequences of which could not have been avoided even if all due care had been exercised
- 2) an event which we, or the supplier of the services could not foresee or forestall even with all due care.

Our liability, shall in any event be limited to:

1) the maximum of twice the cost of your travel arrangements

2) the minimum amount payable in accordance with and/or in an identical manner to:

(a) the contractual terms of the companies that provide the transportation and accommodation for your travel arrangements, which are expressly incorporated into the contract and also form the terms and conditions of separate contracts between you and the carrier.

(b) any relevant international conventions, including the Warsaw Convention 1929, whether as amended by the Hague Protocol 1955 or the Montreal Protocol 1999, or otherwise, or the Montreal Convention 1999. Carriage of passengers and their luggage by sea is governed by the Athens Convention 1974, and in respect of carriage by rail by the Bern Convention and in respect of provision of accommodation by the Paris Convention. Any action arising out of carriage by air or sea must be commenced within the two year time limit prescribed by the Warsaw and Montreal Conventions or the Athens Convention as applicable. In addition, you agree that the operating carrier or transport company's own "Conditions on carriage". You acknowledge that all of the terms and conditions contained in those "Conditions of carriage" form part of your contract with us, as well as with the transport company and that those "Conditions of carriage" shall be deemed to be concluded by reference into this contract.

We are to be regarded as having all benefit of any limitation of compensation contained in these, or any other conventions, including claims for death, injury, delay to passengers and loss, damage and delay to luggage. You may ask for copies of the transport companies' contract terms or the international conventions from our office.

Under EU law (Regulation 261/2004) you have rights in some circumstances to refunds and/or compensation from your airline in cases of denied boarding, carriage or delay to flight, or for which you must pursue the airline. Reimbursement in such cases will not automatically entitle you to a refund of any part of your holiday cost from us. Also, where a delay may result in entitlement to cancel a flight this does not automatically entitle you to cancel or receive a refund for any other arrangements, even though they may have been made in conjunction with your flight. If your airline does not comply with the Regulation you should complain to the CAA Consumer Protection Group on 020 7453 6700/www.caa.co.uk.

10. Indemnity

You accept responsibility for the proper conduct of yourself and your party, when you book arrangements with us. If your actions or omissions cause damage to any property in the provision of the contracted arrangements, or cause delay or diversion to any flight or other means of transportation, you agree to fully indemnify us against any claim (including professional fees and legal costs) made against us by or on behalf of the owner of such property or the operator of the flight or other means of transportation. The Captain of an aircraft Master of a ship has authority over the aircraft/ship and passengers at all times when they are boarding or when they are on board. There will be no liability on our part, or that of any supplier, for any refund, compensation, or costs thus incurred. Additionally, we will have the right to recover full costs resulting from the event from the passenger.

At any port or place we may refuse to embark or may disembark any passenger who, in the opinion of the ship's authorised personnel, might be excluded from landing at further destinations by local authorities or whose presence may be detrimental to the well being of passengers or crew or who may be suffering from any contagious or infectious disease. In cases of quarantine of the ship, or individual passengers (passengers may be required to remain in their cabin or as instructed by authorised personnel on board if they or any other occupant of the accommodation presents any symptoms or may be considered to put other passengers at risk) we will not be liable for expenses thus caused and in such cases as above there will be no entitlement to any refund or compensation and we will have no liability for costs incurred as a result.

Each passenger warrants that they are fit to travel. IPC reserves the right to require any passenger to produce evidence of the same and cannot accept liability for any situation arising out of a failure to disclose any pre-existing condition or disability. Passengers with physical or mental disabilities or other conditions which may require special assistance, e.g. use of a wheelchair or scooter, or service animal, must advise us in writing before a booking is made. Passengers who use wheelchairs or who may require special assistance must be accompanied by someone who is able to assist them on shore and at sea.

Your specific passport and visa requirements and other immigration requirements are your responsibility and you should confirm these with the relevant Embassies and/or Consulates. If you cannot travel because you have not complied with the latest requirements, we do not accept responsibility. If you have made independent travel arrangements you accept for joining the ship in good time, regardless of any change to the sailing time or date, or to the itinerary. We are not able to refund monies paid to us, or any third party acting on our or your behalf, or make compensation or other payments where, for whatever reason, you fail to join the ship. Passengers going ashore are responsible for re-boarding the ship prior to departure from port.

We reserve the right to substitute another vessel for the scheduled one whether or not owned or operated by IPC. Any part of the travel arrangements and the voyage is subject to cancellation, delay, modification, or island/mainland visit cancellation for any reason, including medical disembarkation of crew or passengers or any other circumstances beyond our or our suppliers' control. You therefore acknowledge and agree that the scheduled itinerary for the voyage and the announced departure and arrival times are not guaranteed and we shall not be liable to passengers for any damages or other claims in the event of any delay, changes in itinerary or inability to perform services by reason of any event or events beyond our or our suppliers' control.

11. Insurance

It is a condition of the contract with us that you and every member of the booking has travel insurance in force for the entire duration of the holiday, covering at least the cancellation of the booking and providing medical cover for illness or injury and repatriation while overseas. Please provide us with the name of your insurance company, together with their 24-hour emergency number with your booking or as soon as possible.

12. Brochure and Homepage Liability

The brochure published in August 2017 in print and on line, details and prices are valid from August 2017 up to and including September 2018 but may be superseded by subsequent brochures. The same limitation is valid for the homepage presentation of the 2018 voyages.

13. Data Protection

In order to process your booking and ensure your travel arrangements run smoothly and meet your requirements we, IPC, need to use the information you provide such as name, address, any special needs/dietary requirements etc. We take great care in ensuring that proper security measures are in place to protect your information. We must pass the information on to the relevant suppliers of your travel arrangements such as airlines, ships, hotels, transport companies etc. The information may also be provided to security or credit checking companies, public authorities such as customs/immigration if required by them, or as required by law. IPC is not responsible for the privacy practices of any other companies.

If you wish to obtain a copy of the personal information held about you, please write to the below address. IPC may make a small charge for supplying this information as permitted by law.

IPC may wish to contact you by post, e-mail and/or telephone with news, information and offers on its voyages and other holidays we may have available and for market research purposes. If you prefer not to be contacted for the purposes set out above please contact IPC.

Iceland ProCruises Ehf. is represented in the UK by



ICELAND PRO TRAVEL LTD.
Gloucester Avenue Business Centre, Suite 6, 36 Gloucester Avenue, Primrose Hill, London NW8 7BB, Phone 0845 60 666 86



EXPLORE ALL THE POSSIBILITIES

We offer more than cruises!

Visit our other website icelandprotravel.co.uk and contact us at memo@icelandprotravel.co.uk if you would like a brochure of land based holidays. These can also be added to a cruise package.



Imprint

Text: Joe Yogerst, Doris Brandt, Anka Bröcker, Henrike Lenz, Ruth Schooß.

Sources: We will thank our partners and photographers e. g. www.iceland.is, Visit Greenland, Matthias Bierwirth, Denis Burdin, Andreas Clematide, Oskar Petur Fridriksson, Peter Gebhard, Hermann Gudmundsson, Torsten Henn, Svenja Laukart, Michael Maczok, Eggert Johannesson, Erwin Neu, Ottar Sveinsson, Örn Stefánsson, Emil Thor, Johannes Hermannsson

Layout: Wehmeyer+Heinrich, Hamburg; **Print:** SunDance Marketing Solutions; Reproduction, also in extracts, only with permission of Island ProTravel GmbH, Hamburg, Germany.

Stand: August 2017. Subject to modifications and amendments.

TRAVEL WITH EXPERTS

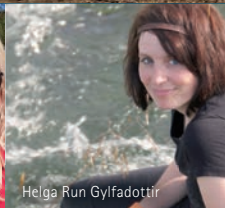


Our team

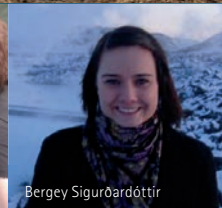
The team at Iceland ProTravel will make your Iceland dreams come true with tailor-made programs that defy imagination.



Jóhanna Lárusdóttir



Helga Run Gylfadóttir



Bergey Sigurðardóttir



Stefania Benediktsdóttir

Learn more at:
www.icelandprotravel.co.uk
www.icelandprocruises.co.uk

Contact:



Gloucester Avenue Business Centre,
36 Gloucester Avenue,
Primrose Hill,
London NW1 7BB

Phone: +44 845 60 66 686
Email: memo@icelandprotravel.co.uk
www.icelandprotravel.co.uk
www.icelandprocruises.co.uk




ABTA No.Y6096